



TK International
020 7794 8700
www.t-k.co.uk

Residential Sales
Residential Lettings
Property Management

Sales Office:
9 Heath Street
Hampstead
London NW3 6TP
E: sales@t-k.co.uk

Lettings Office:
16-18 Heath Street
Hampstead
London NW3 6TE
E: lettings@t-k.co.uk

tk.international
TK International
TK International

Est.
1998



Linden Lea London N2

A beautifully appointed family home that has been meticulously refurbished and redesigned to an exceptional standard. Spanning just under 3,000 sq ft across three floors, the ground floor offers a bright and spacious double reception room, a bespoke Bulthaup kitchen and breakfast room with integrated Miele appliances, a staff room with en-suite shower, and a guest cloakroom.

The upper floors comprise five double bedrooms, including a stunning principal suite featuring a large dressing room and a luxurious full bathroom. Three additional bathrooms serve the remaining bedrooms, including two en-suite shower rooms and a separate family bathroom.

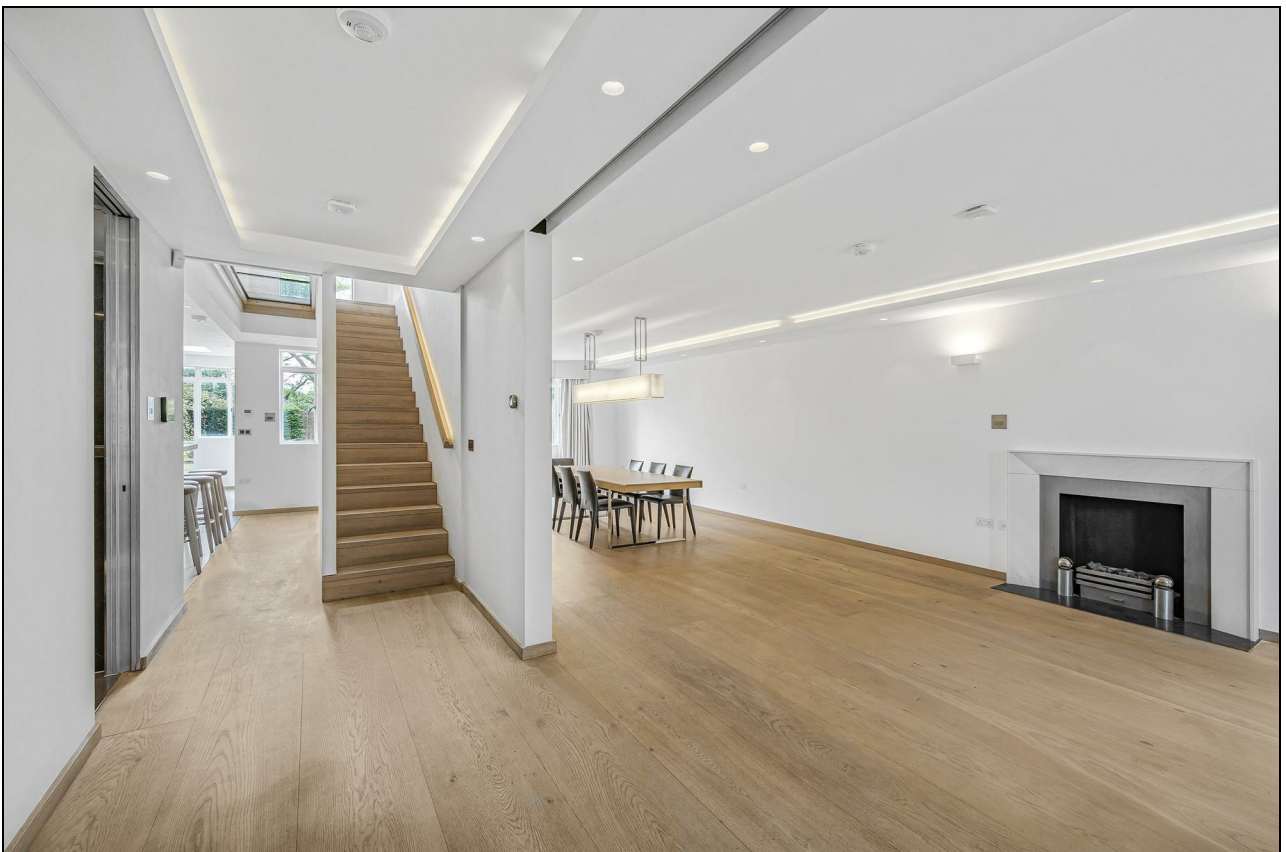
Additional features include a beautifully landscaped rear garden, a full Lutron lighting control system, solid oak flooring, integrated Bang & Olufsen speakers throughout connected to a Sonos wireless system, and a comprehensive CCTV system. Off-street parking is available for one car.

Linden Lea is located in the heart of Hampstead Garden Suburb, just moments from The Market Place, Lyttelton Playing Fields, and Norrice Lea Synagogue.

£3,500 Per Week

SOLE AGENT

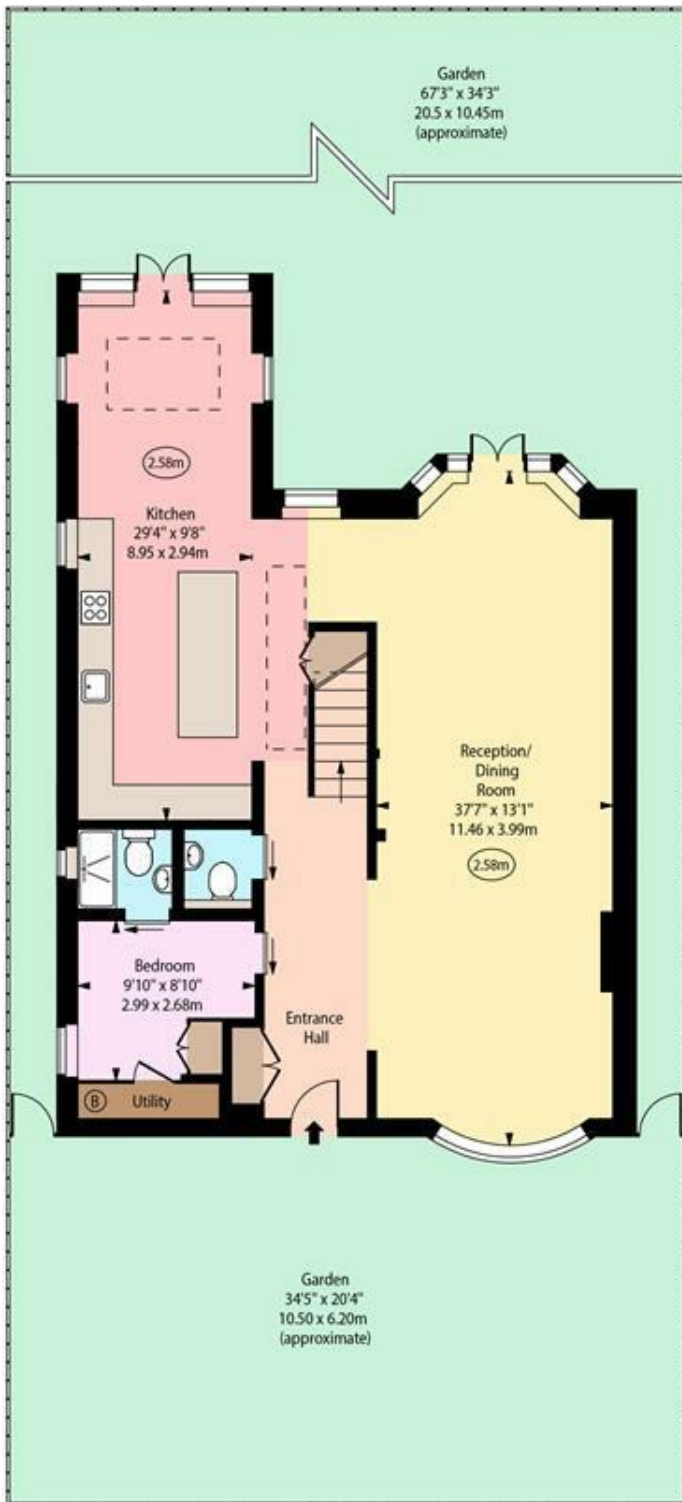






Linden Lea, N2

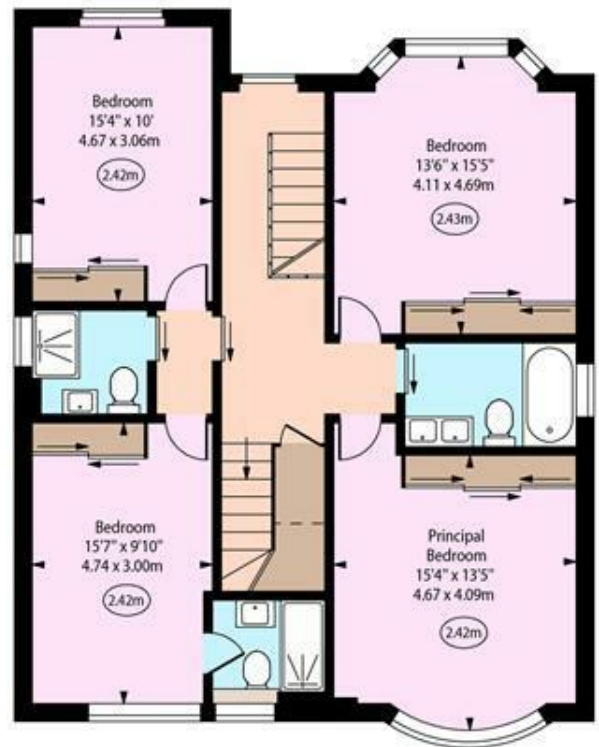
○ - Ceiling Height



Ground Floor



Second Floor



First Floor

Approx Gross Internal Area

2692 Sq Ft - 250.09 Sq M

Approx. Floor Area Including Restricted Heights
(Including Eaves Storage)

2946 Sq Ft - 273.68 Sq M

Every attempt has been made to ensure the accuracy of the floor plan shown. However, all measurements, fixtures, fittings, and data shown are approximate interpretations and for illustrative purposes only. Measured according to the RICS. Not To Scale.

www.goldiens.co.uk
Prepared for TK International
Ref. No. 028716J